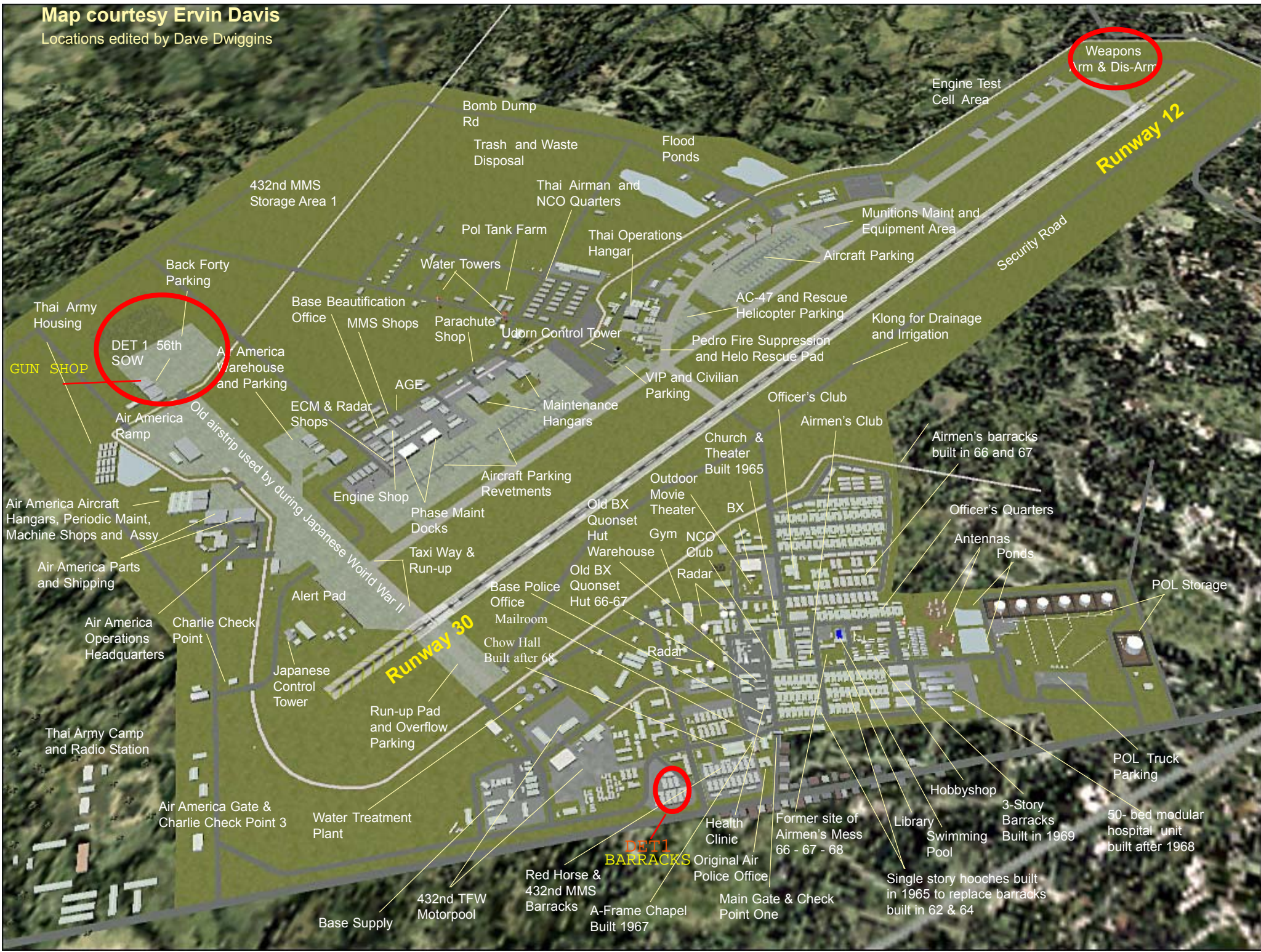


Map courtesy Ervin Davis

Locations edited by Dave Dwiggins



Weapons Arm & Dis-Arm

Runway 12

DET 1 56th SOW

DET 1 BARRACKS

GUN SHOP

Thai Army Housing

Air America Aircraft Hangars, Periodic Maint, Machine Shops and Assy

Air America Parts and Shipping

Air America Operations Headquarters

Thai Army Camp and Radio Station

Air America Gate & Charlie Check Point 3

432nd MMS Storage Area 1

Back Forty Parking

Old airstrip used by during Japanese World War II

Alert Pad

Water Treatment Plant

Run-up Pad and Overflow Parking

Japanese Control Tower

Runway 30

432nd TFW Motorpool

Base Supply

Bomb Dump Rd

Trash and Waste Disposal

Flood Ponds

Pol Tank Farm

Water Towers

Base Beautification Office

MMS Shops

Parachute Shop

ECM & Radar Shops

AGE

Engine Shop

Phase Maint Docks

Taxi Way & Run-up

Base Police Office

Mailroom

Chow Hall Built after 68

Red Horse & 432nd MMS Barracks

A-Frame Chapel Built 1967

Thai Airman and NCO Quarters

Thai Operations Hangar

Udon Control Tower

Maintenance Hangars

Aircraft Parking Revetments

Old BX Quonset Hut Warehouse

Old BX Quonset Hut 66-67

Base Police Office

Mailroom

Chow Hall Built after 68

Radar

Radar

Health Clinic

Original Air Police Office

AC-47 and Rescue Helicopter Parking

Pedro Fire Suppression and Helo Rescue Pad

VIP and Civilian Parking

Church & Theater Built 1965

Outdoor Movie Theater

BX

Gym

NCO Club

Radar

Radar

Former site of Airmen's Mess 66 - 67 - 68

Library

Swimming Pool

Single story hooches built in 1965 to replace barracks built in 62 & 64

Main Gate & Check Point One

Munitions Maint and Equipment Area

Aircraft Parking

AC-47 and Rescue Helicopter Parking

Pedro Fire Suppression and Helo Rescue Pad

Officer's Club

Airmen's Club

Church & Theater Built 1965

BX

Gym

NCO Club

Radar

Radar

Former site of Airmen's Mess 66 - 67 - 68

Library

Swimming Pool

Single story hooches built in 1965 to replace barracks built in 62 & 64

Main Gate & Check Point One

Engine Test Cell Area

Security Road

Klong for Drainage and Irrigation

Airmen's barracks built in 66 and 67

Officer's Quarters

Antennas Ponds

Antennas Ponds

Antennas Ponds

Antennas Ponds

Antennas Ponds

Antennas Ponds

POL Storage

POL Truck Parking

3-Story Barracks Built in 1969

50-bed modular hospital unit built after 1968

Single story hooches built in 1965 to replace barracks built in 62 & 64

Main Gate & Check Point One